



SCHOOL NEWSLETTER

WEEK 5 | TERM 1 | 2025

Uhaikatonga te hahano



WWW.PAPATOETOEHIGH.SCHOOL.NZ



PAPATOETOE HIGH SCHOOL



@PAPHIGH.OFFICIAL



Principal's message

Kia ora Whānau,

We are already well into term 1, and it has been wonderful to see our school buzzing with energy and activity. We hope that everyone has had a positive start to the year and that your children are settling into their learning routines.

We were absolutely thrilled with the turnout at our Pōwhiri at the beginning of the term. It was a wonderful occasion, and we were so pleased to see new and returning members of our community come together to celebrate this important occasion. A huge thank you to everyone who made it such a success!

I want to give a special welcome to all new students, and families, who have joined us this year. We are honoured to have you with us, and we hope you're feeling at home in our school community. It's also great to see our returning students back, eager to continue their learning journeys.



Vaughan Couillault
Principal

MEdLM, PGDipSM, BCom, DipTchg

Important reminders:

PolyFest Friday 4 April – timetable suspended

As so many of our students and staff will be participating in the Polyfest this year (as performers, coaches, managers or stage support team members) we are suspending the timetable on Friday April 4. This means that normal classes will not be operating. Any student that wishes to attend school can still do so and will be accommodated in learning areas. PolyFest provides an excellent opportunity for cultural engagement and learning and we encourage all students to make the most of this time, whether through attending Polyfest or engaging study/revision.

A friendly reminder about our school start times:

- Monday to Friday: school starts at 8:40am sharp
- On Wednesdays, the start time is at 9:40am.

Please ensure students arrive on time to make the most of their school day.

Parking reminders – please be mindful

I have become very concerned about the safety of our students as a result of many caregivers ignoring the parking regulations that surround our school. We have reached out to Auckland Transport for support in motivating drivers to comply. We ask all families to be mindful of parking around the school. Please do not parking on the yellow lines on Carlie Street and Nicholson Avenue, as well as in the no-parking zones on the left-hand side of the streets (that are clearly signposted). In an effort to respect our neighbours, we also ask that you do not park across driveways. Your cooperation helps ensure the safety of our students and smooth traffic flow around the school.

Uniform reminders

You are reminded that full school uniform is expected. If your child is waiting for new uniform items from the shop, please ensure they have a pass from the uniform shop, as no other exemptions will be made. We appreciate your support in helping us maintain a consistent and proud school identity.

Lunches - quality and logistics update

We've received positive feedback about the quality of the lunches so far this year. We acknowledge, however, that there have been some challenges with logistics. If your child prefers to bring their own lunch (or has a significant change to a dietary requirement), please let us know so we maintain an accurate lunch order with the School Lunch Collective.

There is a lot happening across the school in term 1. We encourage you to check out our social media page for regular updates on events, activities, and all the amazing things our students are involved in. As an example, it is fantastic to see all our cultural groups practicing after school, and we look forward to seeing their hard work being rewarded at the ASB Polyfest in week 9 of this term.

We are also delighted to share that many student have already had learning opportunities outside of the classroom, with a number of trips have already taken place. It's great to see our students experiencing hands-on learning opportunities, and we look forward to more of this throughout the year.

Thank you for your continued support and involvement in our school community. If you have any questions or feedback, please don't hesitate to reach out. Here's to a successful and fulfilling term 1!

Ngā mihi nui,
Vaughan Couillault
Tumuaki/Principal

GET INVOLVED CLUBS & GROUPS 2025

We had a successful day with sign-ups for clubs and groups. It was fantastic to see so many students eager to get involved and explore new interests.

Are you looking to make new friends, explore your passions, or just try something new? Papatoetoe High School offers a wide range of clubs and groups that students can join! Whether you're into sports, arts, culture, or academic pursuits, there's something for everyone.

Why join a club?

Being part of a club is a great way to develop new skills, build friendships, and enhance your school experience. It also looks great on your CV and can open doors to exciting opportunities in the future.



How to sign up

The best part? You can still sign up for any club or group! A full list of available clubs is posted on Teams and the school website. Simply check it out, find something that interests you, and join in the fun.

Need more info?

If you're unsure about which club to join or need more details, see Mrs. Ralphs in the arts, culture and events office, located next to student reception. She'll be happy to help you find the perfect fit!



Don't miss out on the chance to be part of something amazing. Join a club today and make the most of your time at Papatoetoe High School!



Celebrating culture and talent at ASB Polyfest 2025

As the arts, culture and events coordinator, I am thrilled to announce that our school will once again be participating in the prestigious ASB Polyfest, set to take place from 2 April to 5 April 2025, at the Manukau Sports Bowl. This year marks the 50th year of celebrating Polyfest, making it an even more special occasion for all involved.

ASB Polyfest is the largest Polynesian cultural festival in the world, bringing together thousands of students from across the Auckland region to perform traditional dances, songs, and speeches on dedicated stages representing Māori, Samoan, Tongan, Cook Islands, and Niuean cultures among others.

The event fosters unity, cultural appreciation, and artistic excellence, creating an unforgettable experience for all involved. In addition to these cultural stages, there is also a Diversity stage, which welcomes performances from a variety of other cultural backgrounds, further highlighting the richness of Aotearoa's multicultural identity. We have 10 groups performing on different days: Cook Island, Fijian, Indian, Japanese, Kapa Haka, Punjabi, Nubian, Samoan, Tongan and Vietnamese. Times and days are to be confirmed. Tickets are now on sale via this link:

<https://www.iticket.co.nz/events/2025/apr/asb-polyfest>.

For those unable to attend in person, there will be a live stream available, allowing everyone to experience the performances and celebrations from anywhere.

Please contact Mira Ralphs if you have any questions.



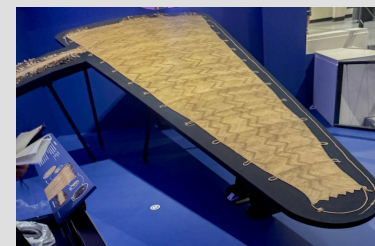
DIGITAL TECHNOLOGY

The Hangarau Matihiko (Digital Technologies) department has kicked off the year with exciting learning opportunities for our ākonga (students)! Our students have started coding using Python, developing their coding skills through interactive lessons. Many have successfully completed python courses on grok learning, earning certificates that recognise their hard work and achievement. Ka mau te wehi! (awesome work!) to all our budding programmers! Meanwhile, the Robotics Club has taken on an exciting new project using raspberry pi. This hands-on experience allows students to explore programming, electronics, and problem-solving in a fun and creative way. If you're interested in robotics and technology, we invite you to join the Robotics Club, Tuesdays during lunchtime in F1 and be part of this innovative journey! We look forward to an inspiring year ahead, filled with coding, creativity, and collaboration.



YEAR 11 ART TRIP

This week, our Year 11 Art students visited the Auckland War Memorial Museum to deepen their understanding of Māori artistry and history. They took part in a kōrero about Te Rā, the only known customary Māori sail still in existence, exploring its significance and the knowledge embedded within its creation. Students had the special opportunity to handle taonga and learn about the ancestral journey of Māori from Hawaiki to Aotearoa. They also engaged in observational drawing, capturing the intricate details of taonga within the museum's galleries. A key moment of the visit was spending time in the presence of Hotunui, the beautifully carved whare tūpuna housed in Te Marae Ātea Māori Court. This haerenga provided a meaningful connection between art, whakapapa, and mātauranga Māori, leaving students with a deeper appreciation for the stories woven into these taonga.



ENVIRONMENT GROUP

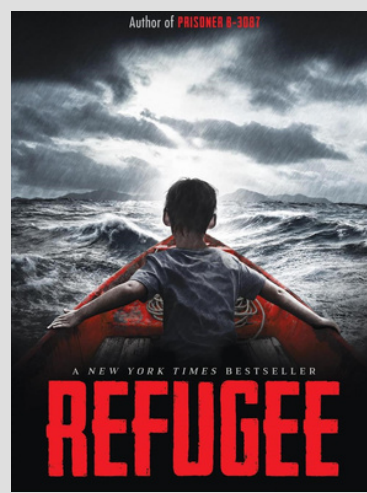
We have nearly 130 students sign up to be part of the group this year. The senior leaders of the group would like to see most of them actively involved in the group's activities this year. Mrs Hart has been busy with her team of beekeepers looking after our hive. New members are welcome to join; see Mrs Hart, the Science technician in S-block. The stream testing group have also been busy collecting water quality data. If you would like to be part of this group, speak to Karen Tat Luong, who leads this team



BRUCE HUNTER LIBRARY BOOK OF THE MONTH

February: Refugee is an easy read with three stories set in three different places, that intertwine in the end, and teach us about the strength of human kind.

March: The Gilded Ones is the first of three fantasy stories about a strong woman who shares a story of female empowerment and sisterhood.



GATEWAY & CAREERS



Mrs. Kristina Pahlmann joins us this year as our new Gateway Coordinator. A former Papatoetoe High School student, Mrs. Pahlmann will be supporting students in securing suitable work experience placements and earning credits through the Gateway programme. Currently, 38 students are undertaking placements in retail and forklift operations for Term 1. Placements for the Term 1 holiday period are nearly full. Students requiring further information regarding the Gateway programme are invited to visit with Mrs. Pahlmann in room G5 during intervals and lunchtimes.

UNIVERSITY PRESENTATIONS

All presentations are at the start of lunchtime

- UNITEC: Thursday 13 March – G5
- University of Otago: Tuesday 18 March – Library
- University of Auckland: Thursday 20 March – Library
- Defence Forces: Monday 21 March – G5
- MIT: Thursday 27 March – G5
- AUT: Monday 31 March – Library



We took students who are interested in Automotive Engineering to visit automotive and panel beating sites around South Auckland. This trip was organized by MITO who oversee the automotive industry in NZ. Students were able to get a first hand look at industry and ask questions.



FIRST FOUNDATION SCHOLARSHIP

This scholarship is open to any students currently in year 12 who meet the eligibility criteria below. Please come and see Mrs Parshotam in G5 for more information.

Eligibility:

1. Household income threshold guideline
 - Income cap \$75K – 1-2 dependents
 - Income cap \$90K – 3 or more dependents
2. Currently enrolled in Year 12 at a NZ Secondary School
3. Overall endorsement of Merit or Excellence at Level 1
4. Be a NZ Citizen, NZ Resident or Refugee Status

UNIVERSITY OF WAIKATO

We had Ainsley come out from the University of Waikato for a presentation. This is the first of all the university presentations we will be having over the next few weeks. I encourage students to attend all the presentations so that it helps them make an informed choice for university. We will also be having a Defence Force and Police presentation.

